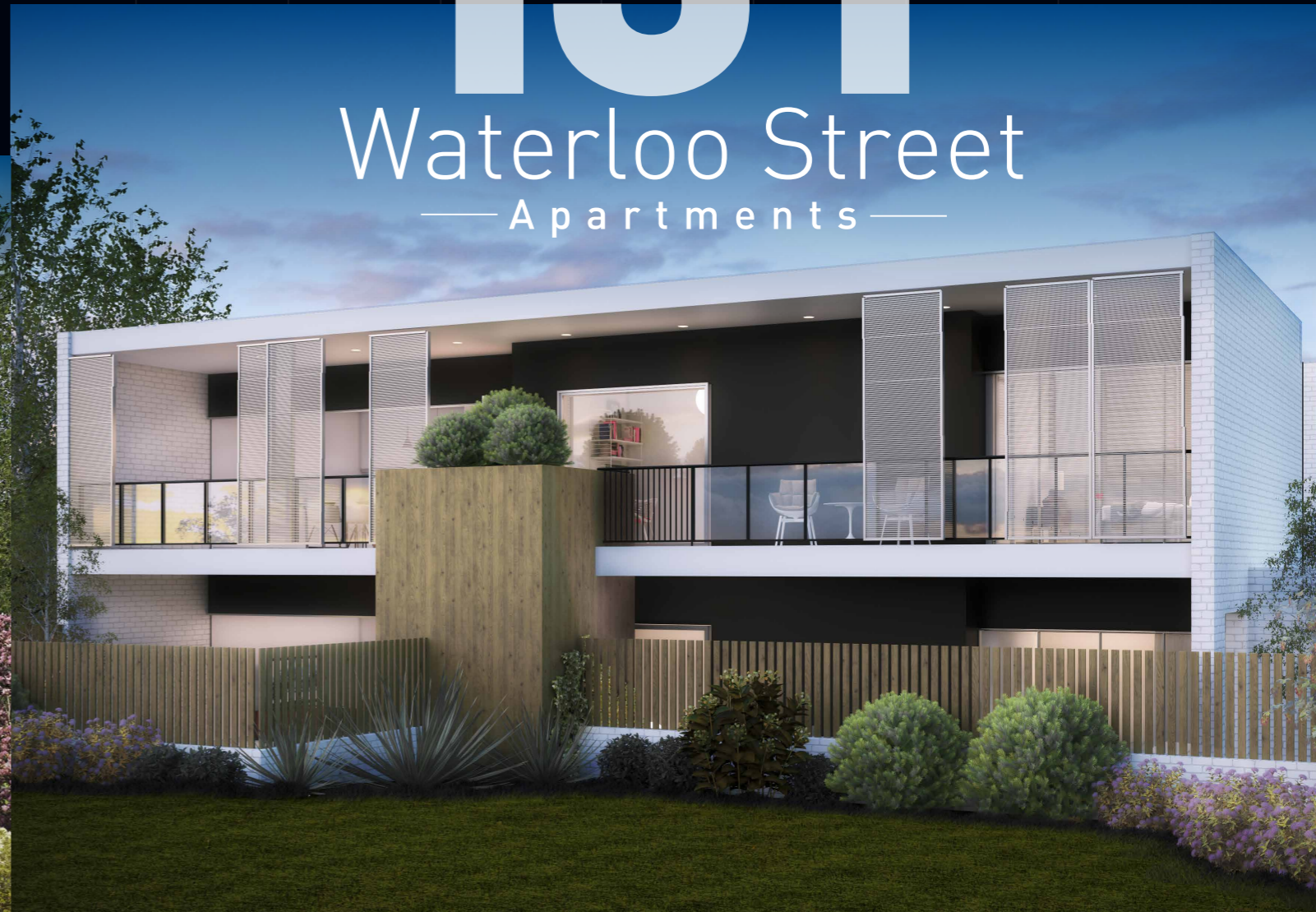


- 1 Perth CBD – 6km
- 2 Glendalough Station – 2km
- 3 Northbridge Entertainment Precinct – 6km
- 4 Main Street cafes and restaurants – 500m
- 5 Lake Monger – 3km
- 6 Mount Hawthorn cafes and shops – 2.5km
- 7 Leederville cafes and shops – 4km
- 8 Karrinyup Shopping Centre – 7km
- 9 Innaloo Shopping Centre – 3km
- 10 Event Cinemas Innaloo – 3km
- 11 Scarborough Beach – 7km

# 131

## Waterloo Street — Apartments —



Dominic Ferraro  
0409 373 000

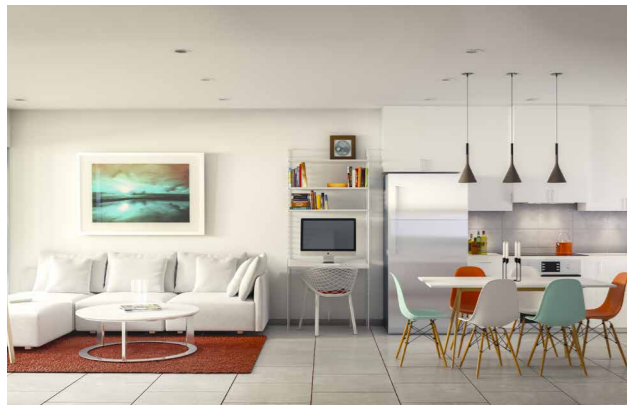
W: [www.limnios.com](http://www.limnios.com) E: [dominic@limnios.com](mailto:dominic@limnios.com)



# 131

## Waterloo Street

— Apartments —



## The Vision

Just a few kilometres from the city, is this hidden gem just waiting to be discovered. 131 Waterloo Street Apartments in Tuart Hill, offer you high spec, high quality and contemporary apartment living with all the benefits of a well-established and sought after suburb.

Tuart Hill is an attractive mix of older, established houses, modern townhouses and apartments, with easy access to well-established and high quality amenities within the City of Stirling and the neighbouring City of Vincent.

131 Waterloo Street Apartments are situated far enough away from the hustle and bustle of main roads, but close enough to enjoy the convenience of a gateway to everything Perth has to offer. High class restaurants, bars, pubs, cafes, sporting and entertainment venues are so easy to reach. This truly is the best of both worlds.



## The Lifestyle

When you buy a 131 Waterloo Street Apartment, not only are you buying a fabulous home, you are also buying into a lifestyle. No more spending hours in the car or on public transport, as you are in the enviable position of having easy access to everything Perth has to offer. Stroll around the corner to Main St and enjoy a coffee or a meal, or you are just a short hop away from the bustling Mount Hawthorn and Leederville bars, restaurants, cafes and hawkers markets.

For those with a little more energy, Grenville, Robinson and Yokine Reserves are all within easy reach, as is Lake Monger with its wildlife and wetlands, exercise equipment, running and bike tracks. Or if the beach

is your thing, head straight up Scarborough Beach Road and you are there in no time.

More interested in shopping? Well you are in the perfect position. Both Innaloo and Karrinyup shopping centres are a short drive away or you could take the train or bus into the city (or make a 10 minute drive) and enjoy the local and international retailers on offer.

Being so close to everything means less travel time, lower petrol bills, better access to public transport and less environmental impact. You will have more time to relax and enjoy life and the place to start is a 131 Waterloo Street Apartment. All you have to do is move in and start living.

## The Apartments

Each one of these beautifully stylish apartments is built and finished to an exceptionally high standard. All apartments come with a contemporary and modern feel, along with everything you would expect to find in a high quality, low density development. Spread over 3 separate buildings with large balconies and exceptionally large courtyards this development gives the feeling of more open space than any other development of its kind. Take a look at the specifications and you will see that everything has been covered.

Features include:

- BOSCH appliances
- Dishwasher
- Fridge
- Washer/dryer in the laundry
- Microwave oven
- Jamel cabinets
- Quality fixtures and fitting throughout
- GRANDHALL GT 4B Stainless Steel Outdoor Kitchen (or similar)
- Built in robes
- Reverse cycle air conditioning
- Instantaneous hot water system
- Television and Foxtel points
- 3 visitor parking bays

There are 10 apartments to choose from, a mixture of one bed one bath; two bed, one bath; and two bed, two bath. Each apartment comes with secure, underground parking with the option to purchase additional car parking bays.



## The Location

With a 131 Waterloo Street apartment comes choice. Choice to do things the way you want to do them. You can use the abundant public transport which is practically on your doorstep or drive anywhere with direct access via the freeways which are so easy to reach. Tuart Hill was recently named as one of Perth's up and coming suburbs and it's no surprise. It is central to Perth's most exciting and sought after places yet set in an area with a strong community and vibrant feel, surrounded by areas of lush greenery. It is because of this that demand for these low density apartments will be sky high.

Take a look at how close you will be:

- Perth CBD – 5km
- Glendalough Station – 2.5km
- Northbridge Entertainment Precinct – 6km
- Main Street cafes and restaurants – 500m
- Grenville Reserve – 950m
- Lake Monger – 5km

- Mount Hawthorn/Leederville cafes, restaurants and shops – 2.5km
- Karrinyup Shopping Centre – 7km
- Innaloo Shopping Centre – 3km
- Event Cinemas Innaloo – 3km
- Perth Airports – 15km